



A Guide to StruCad Drawing Viewer

A brief introduction.

Steel Drafting Limited uses StruCad, the world's leading 3D structural steel detailing software to produce shop drawings. One of the features of the program is the ability to provide free software to enable clients, engineers and architects to inspect the StruCad model and view and print the drawings for each formal issue on a project. The software is referred to as StruCad Drawing Viewer and Struwalker.

The StruCad Drawing Viewer contains drawings associated with an issue. A few of the main features of the viewer are:

- Full print facilities with the ability to batch print.
- View parts of the drawing with Zoom/Pan/Fit, Layers On/Off.
- Add comments to drawings in packages.
- Change the status of drawings to approved, not approved and return to sender.

Receiving the software.

The programs are sent in zip format. The install requires 10.5MB of free disk space. The software is self-extracting and just needs to be saved to hard disk drive of the computer. Both programs will self-load once clicked on and both contain help menus to assist in their use. To enable the viewing of fabrication drawings in Struwalker both packages need to be in the same folder. There are a few options in respect to how the software is sent to you;

- Direct via email
- Downloaded directly from StruCad's website, www.acecad.co.uk
- A secure user account is set up on Steel Drafting Limited website and files etc downloaded from the site.
- www.steeldrafting.co.nz

The option chosen is down to the recipient.

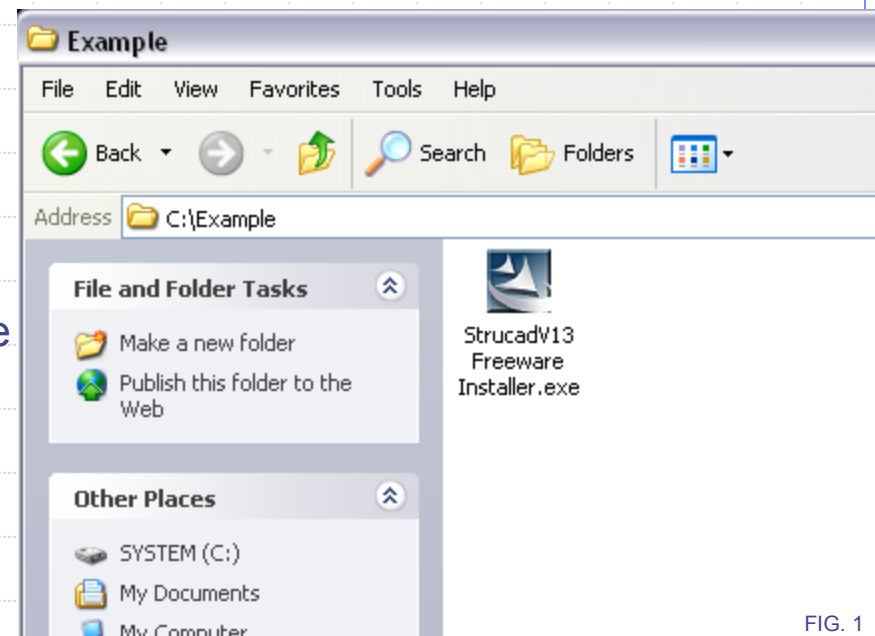


FIG. 1

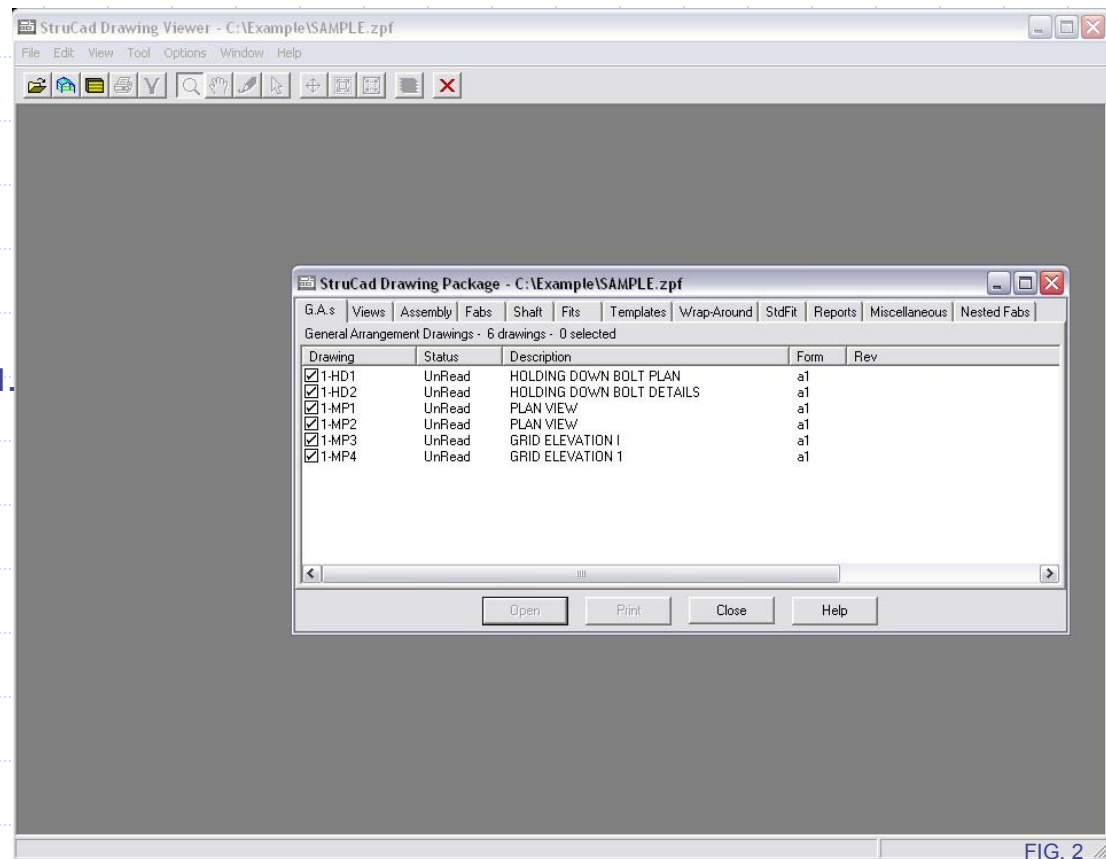
Opening a .zpf drawing package.

Once the required software is installed Windows will automatically assign it to open the relevant files.

To view or print drawings you will need to open the .zpf package provided by Steel Drafting Ltd.

- Locate the .zpf file sent to you.
- Double click the icon

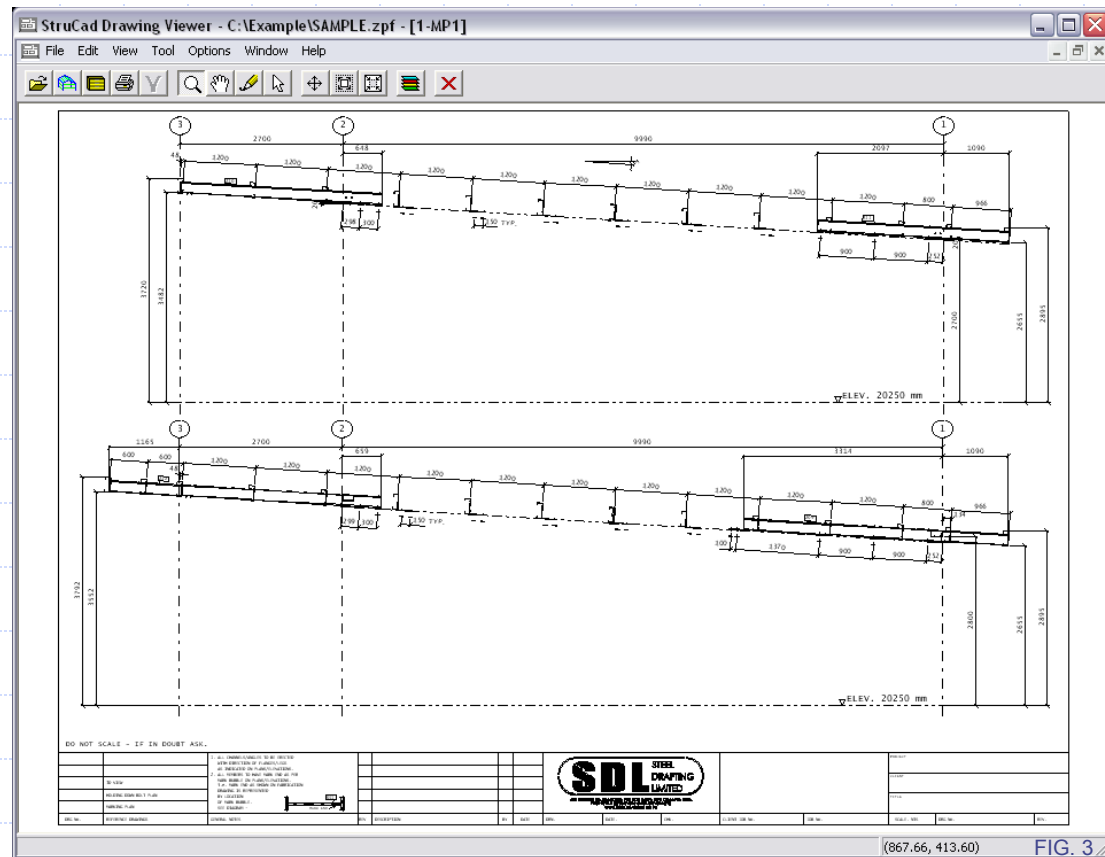
You will now be at the main screen similar to Fig. 2



Viewing a drawing file.

To view a selected drawing simply double click on the desired drawing or click the open button with the drawing selected.

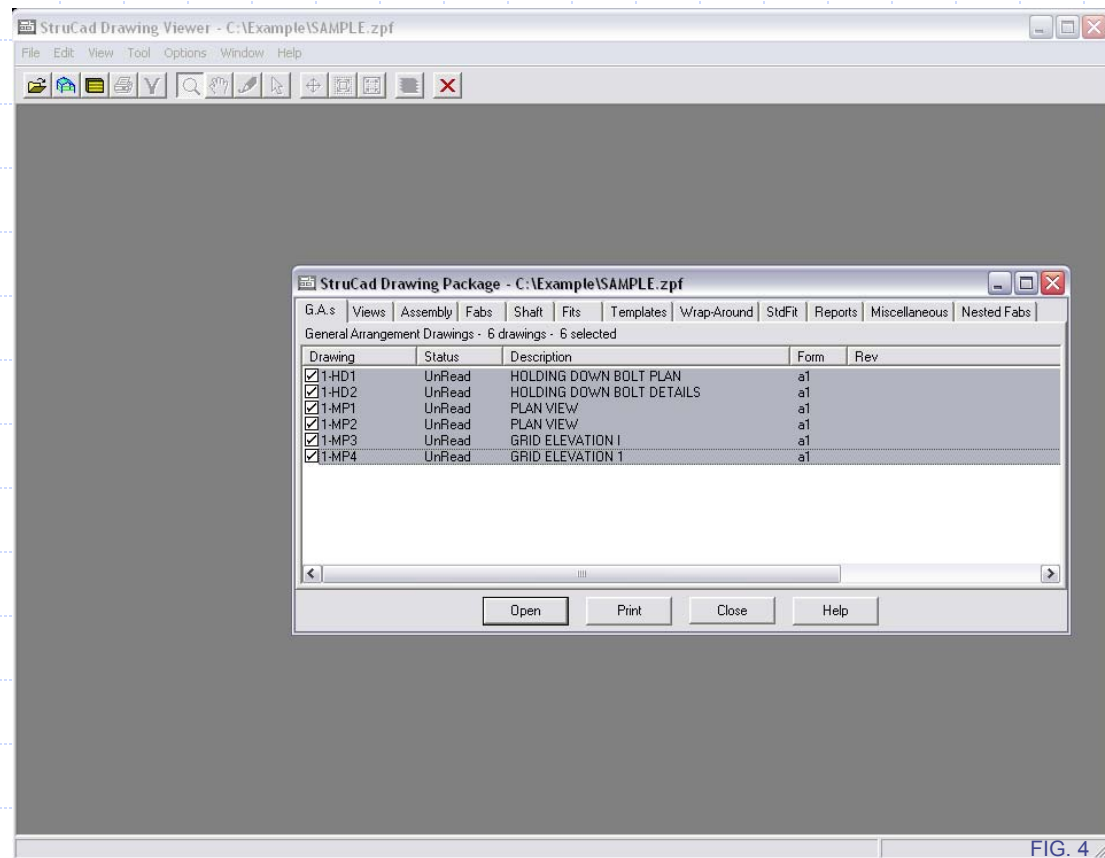
An image of the drawing will then be opened in a new window similar to the sample in Fig. 3



Printing and batch printing drawings.

To print any drawing you select it as you would to open it, and press the Print button. This will take you to the print settings screen to finalise the print.

When batch printing the method is basically the same. You select the first drawing you wish to print, then while holding the Shift key select the final drawing you wish to print. This will select all the drawings in between these two. Then you press print.





Should you have any questions please don't hesitate to contact us.

69A Higgins Road
P.O. Box 16001 Hamilton, 3245

Ph/Fax: (07) 847-4029
Email: info@steeldrafting.co.nz